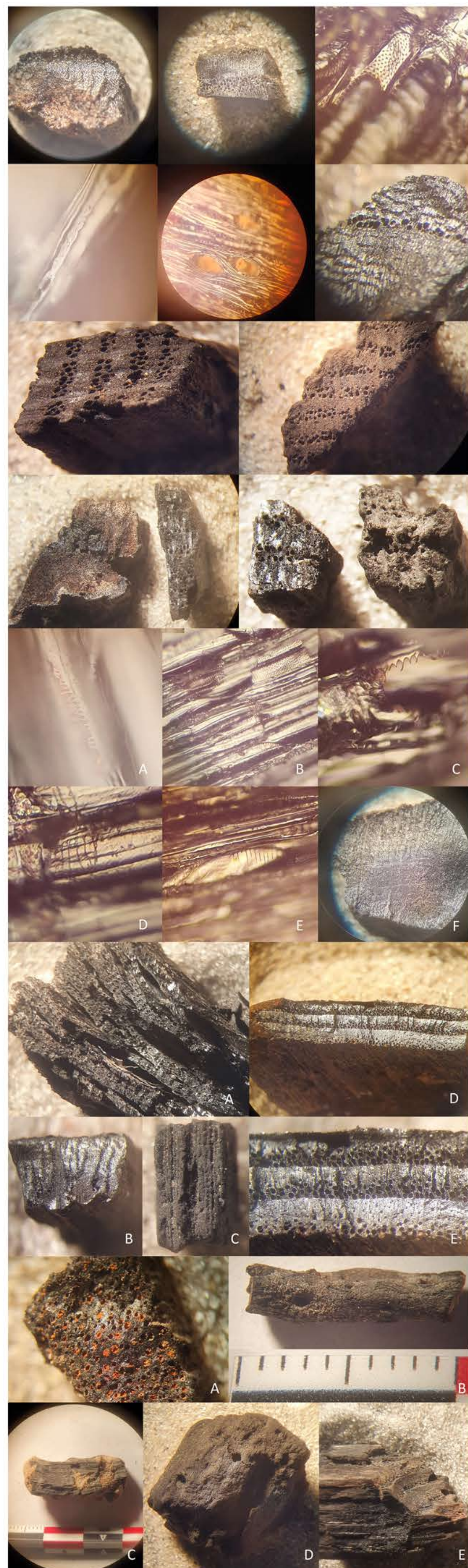


# WOODAN: CHARCOAL

## A NEW ANTHRACOLOGICAL DATABASE

### Developing a version of WOODAN for documentation of charcoal data



#### Why?

Anthracological analysis is an important component of archaeological and palaeoecological research in The Netherlands and Belgium. This research has resulted in a large body of data which needs to become more accessible.

#### What?

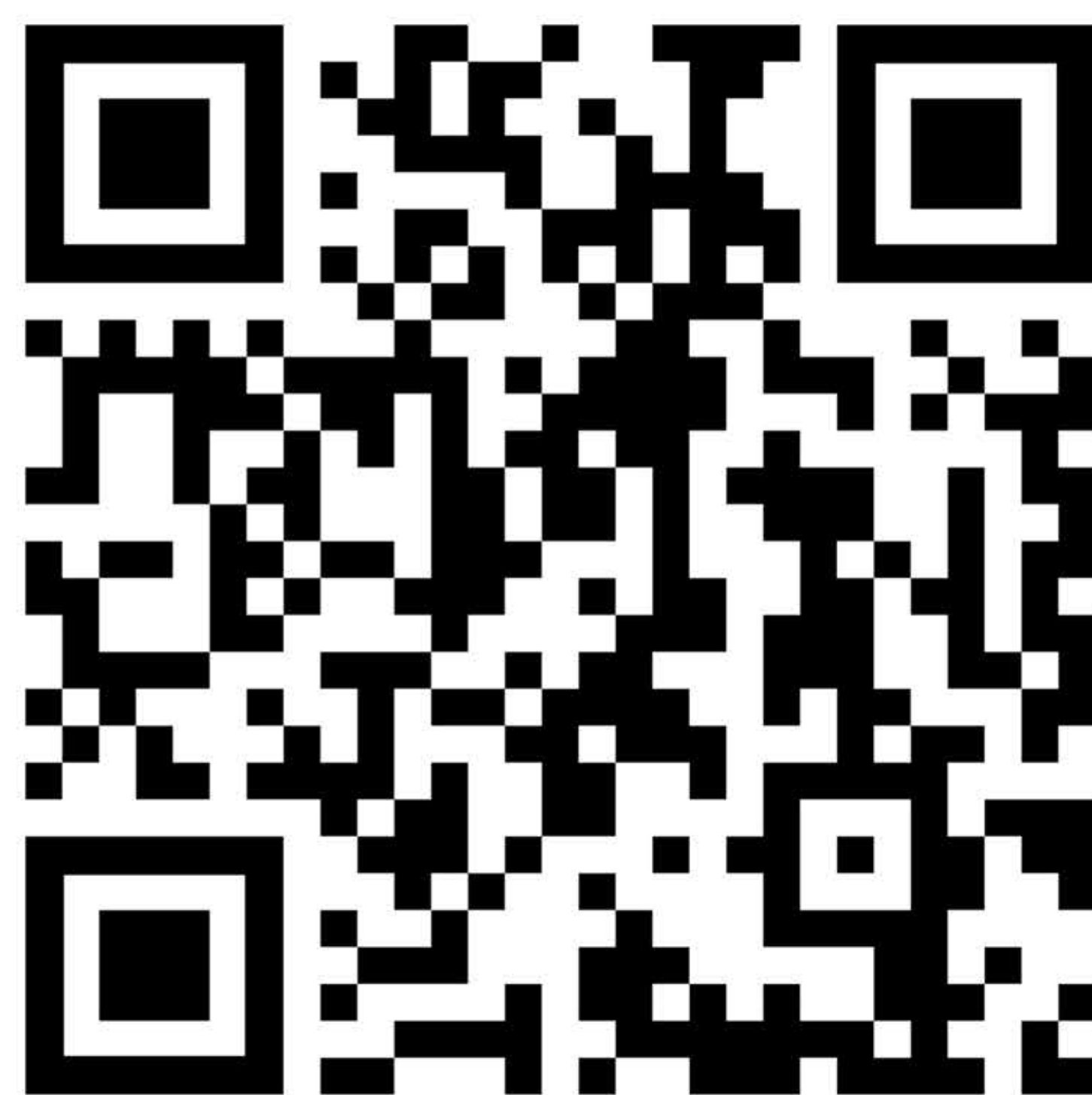
In the past year, a work group of charcoal specialists and database developers from state agencies, universities and private research institutes, has begun work on a new repository for charcoal data based on the existing WOODAN: wooden artefacts database. WOODAN: wooden artefacts is an open, web-based resource developed for documentation of wooden finds.

#### How?

WOODAN: charcoal will become an independent database, with a structure created specifically for anthracological data. Like WOODAN: wooden artefacts, it will be an open, web-based resource.

#### Interested?

Would you like receive future updates about WOODAN: charcoal, provide feedback or actively participate in development meetings and workshops? Then, please scan the QR code below:



woodancharcoal.org



WOODAN is a Web database using MySQL for storing data and Laravel (PHP) as language between the database and the website which is running on Bootstrap (HTML, CSS) and Javascript

For questions about the technology of WOODAN, please email: [info@woodan.org](mailto:info@woodan.org)




Radek Grabowski  
Biax 

Silke Lange  
Biax 


Koen Deforce  
Ghent University  
Royal Belgian Institute  
of Natural Sciences   


Kristof Haneca  
Flanders Heritage Agency 

Otto Brinkkemper  
Dutch Heritage Agency 

Anja Fischer  
University of Amsterdam 

Ronald Visser  
Saxion University 

Jelte van der Laan  
Cambium Botany 

Stephan Nicolaj  
Qursi Software 