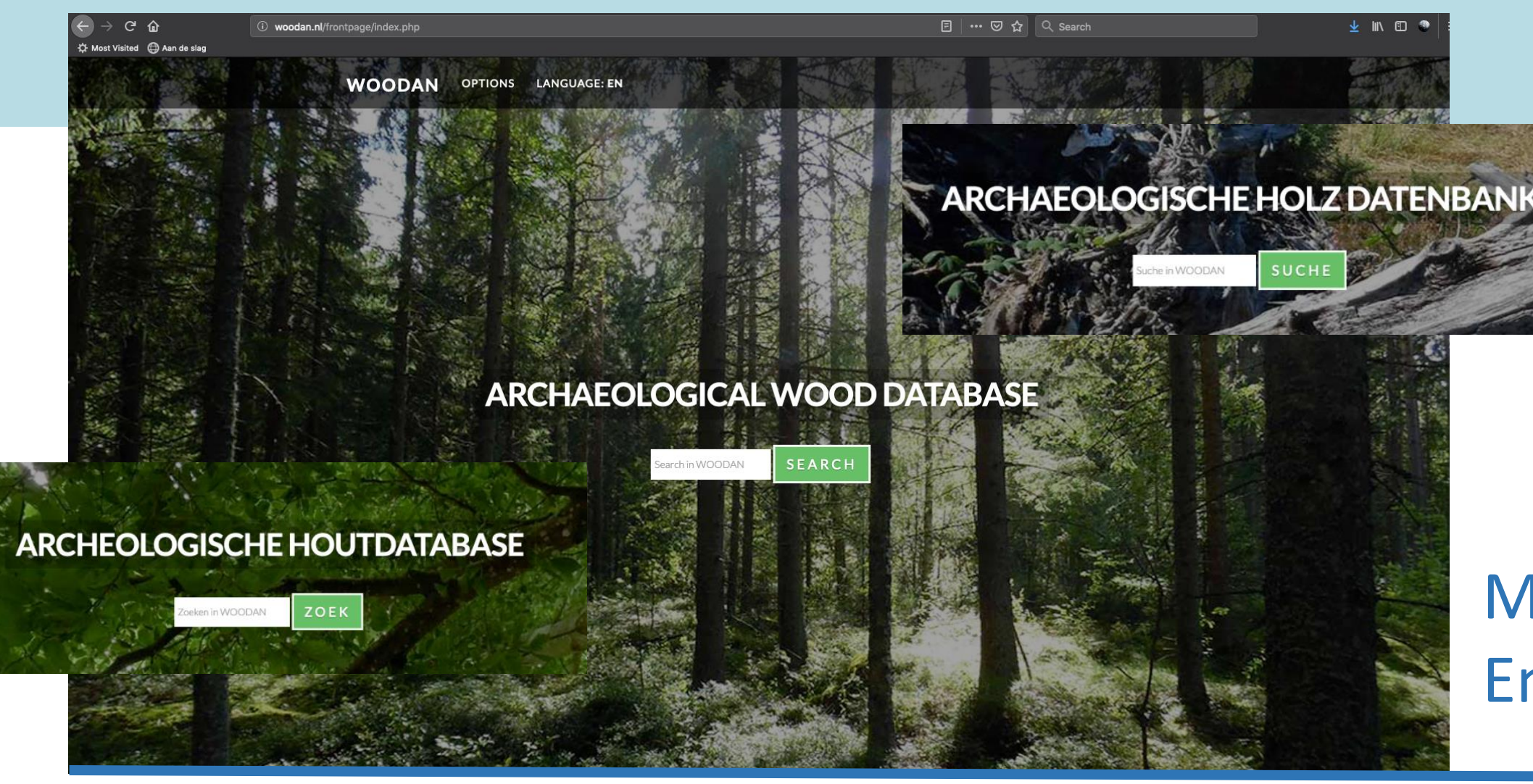
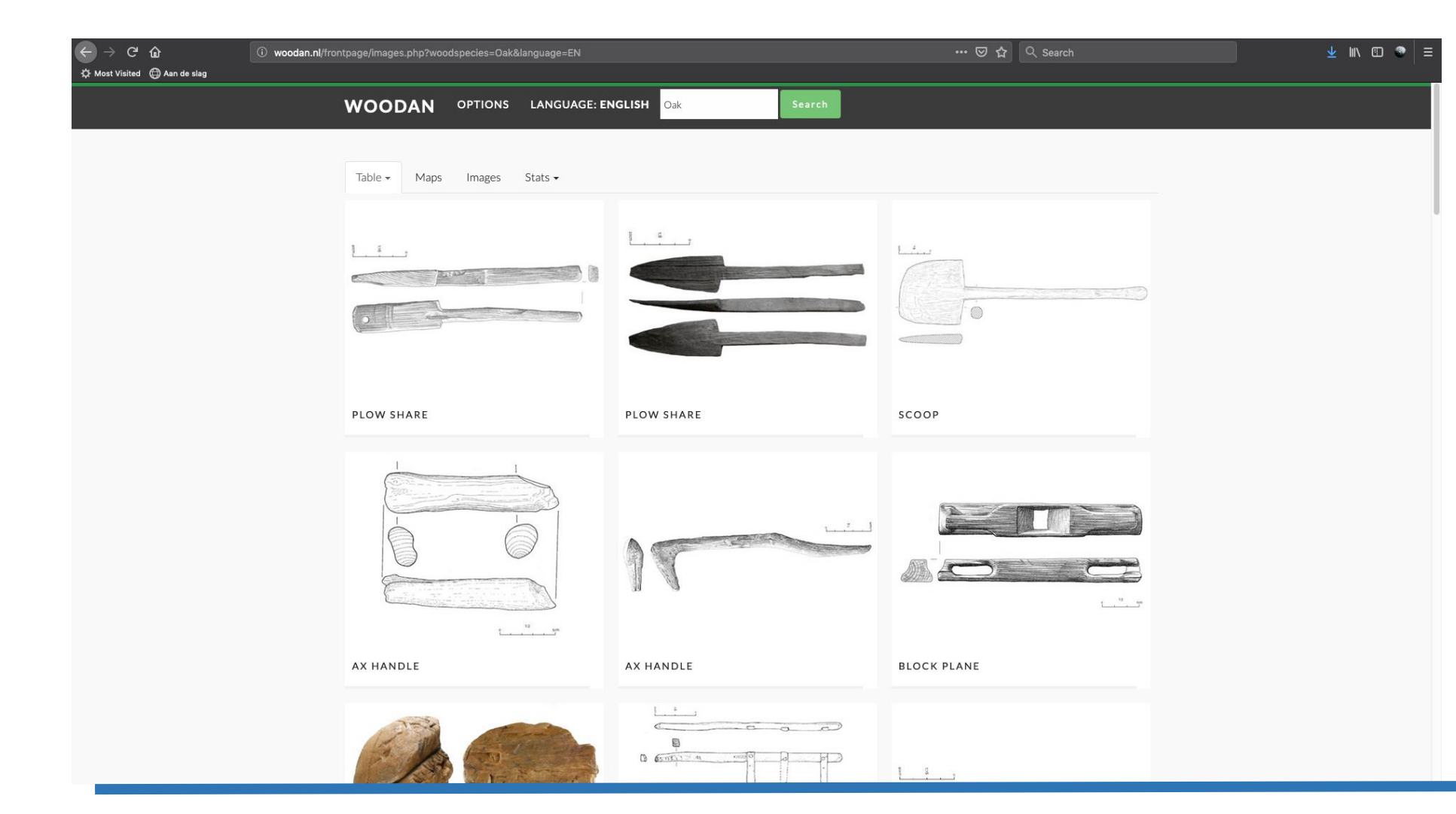


WOODAN: towards a European database of wooden archaeological artifacts

Kristof Haneca¹, Koen Deforce¹, Silke Lange^{2, 3}, Jelte van der Laan³, Stephan Nicolaij³
 (1: Flanders Heritage Agency – Belgium // 2: BIAx Consult – The Netherlands // 3: WOODAN Foundation – The Netherlands)



Multilingual interface: Dutch, English, German, French



Visual presentation of advanced queries

Image	Wooden number	Object	Wood species	Time	Dating
	19003000	Handle	Birch	EMPTTY	Late Middle Ages
	19003001	Ht	Common oak	Roman Age	
	19003002	Beam	Common oak	Iron Age/Middle Ages	
	19003003	Plate	Common oak	Adriatic	Middle Ages
	19003004	Ht	EMPTTY	Roman Age	
	19004000	Handle	Maple	EMPTTY	Late Middle Ages
	19008000	Handle	Mistle	EMPTTY	Late Middle Ages
	19003002	Ht	Oak	Roman	
	19003003	Scrap	Oak	Bronze	EMPTTY
	19003000	Disc wheel	Oak	1st-4th Century Western	Roman Age

Table overview of selected data & export function

www.woodan.org

WOODAN = archaeological & chronological context + species identification

WOODAN IN SHORT

THIS IS WHAT WE DO AT WOODAN AND WHAT SETS US APART

- Many finds**
In WOODAN we have a collection of a few thousand archaeological wooden artifacts. All finds have been collected by archaeologists or amateur archaeologists and in many cases have been published in separate reports.
- Synthetic**
WOODAN started from a synthesizing study for merging many separate Malta reports. While this research has been completed, we will continue with our mission to collect and publish data.
- International**
After a start in the Netherlands, WOODAN soon began to look beyond the national borders. We presented the system at, and started collaborating with archaeologists from Belgium, Ireland, Lithuania, Austria, Germany ...
- Multilingual**
To break through country borders it is necessary to break through language barriers. WOODAN has therefore developed its own system for translating the data. The database system now runs in English, French, German and Dutch.
- Modern technology**
WOODAN can be opened through various devices and systems. A MySQL database runs behind the website and we work with PHP and JSON to unlock the data.
- Smart search**
For the website it is important that it is easy to use. WOODAN interprets your search, regardless of whether you are searching on a type of wood, on a location, on types of objects, or on a specific period...

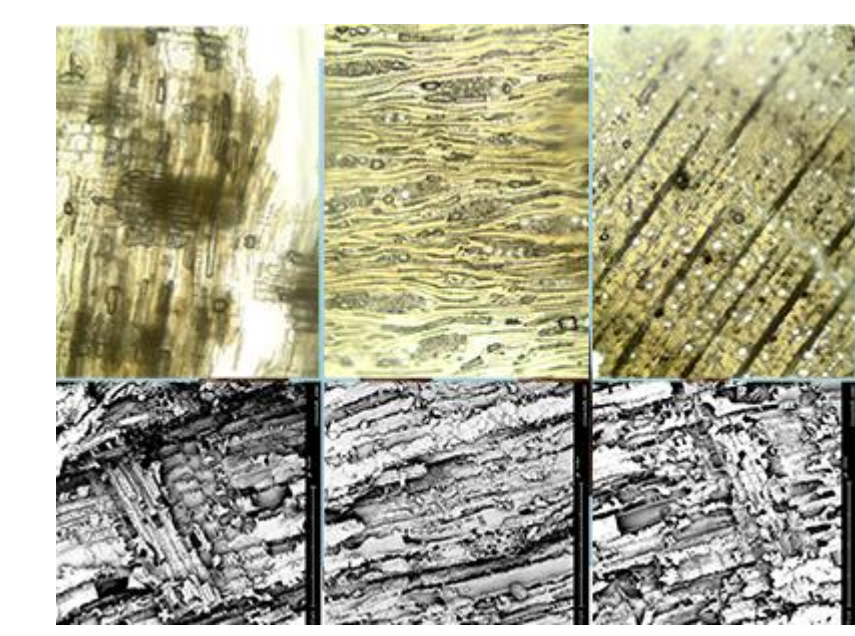
Plate, Middle Ages, Antwerp - Belgium
Fagus sylvatica



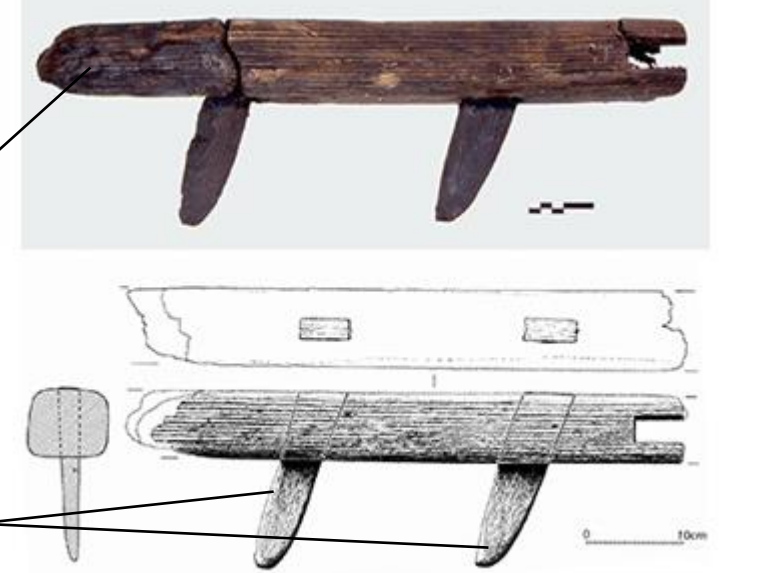
Wheel, Roman, Gent - Belgium
Quercus sp.



Knife handles, Post-Medieval shipwreck in the North Sea
Taxus sp.



Harrow, Early Roman, Poppel - Belgium
Quercus sp.



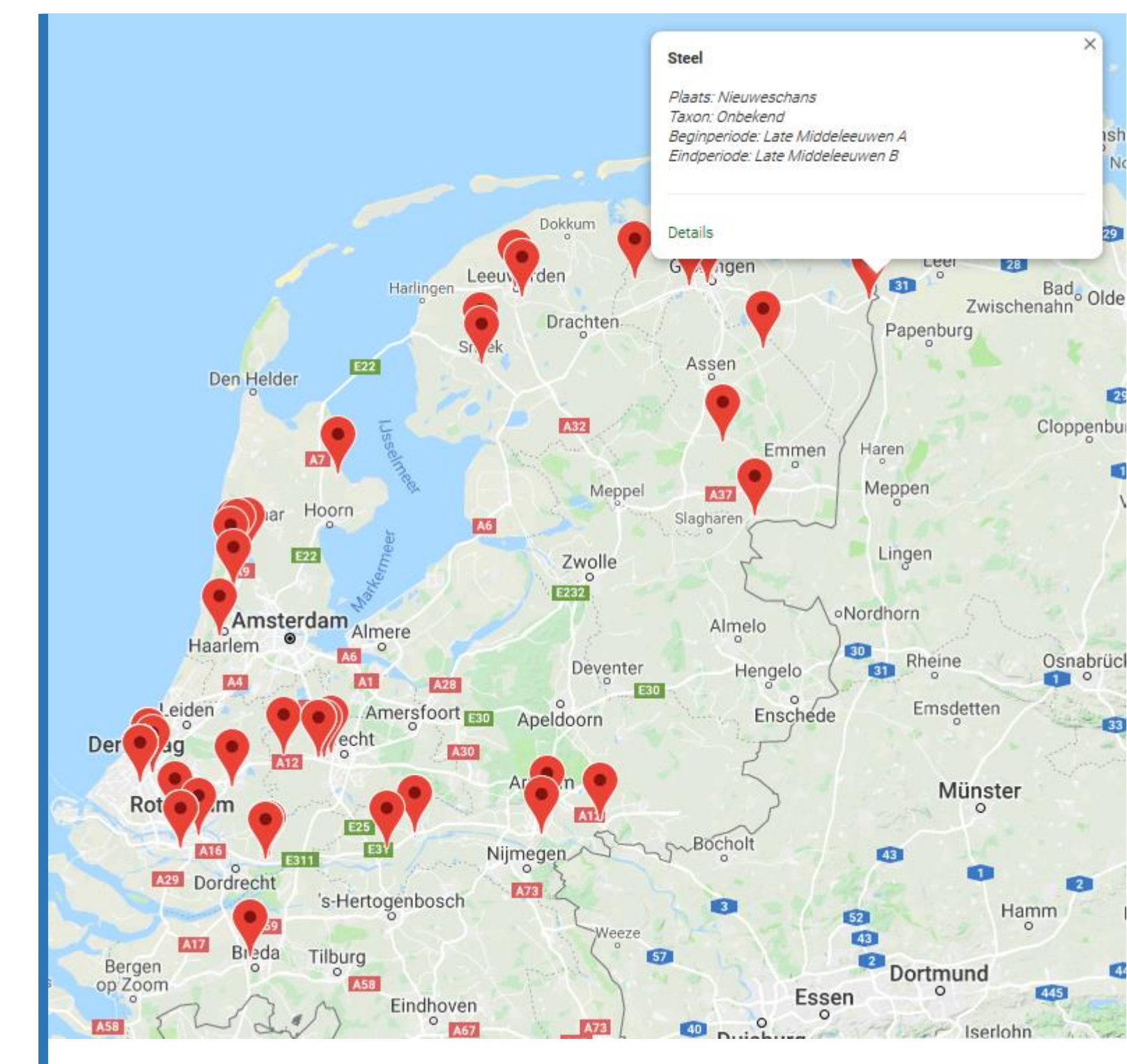
Plowshare, Iron Age, Brede – The Netherlands
Quercus sp.



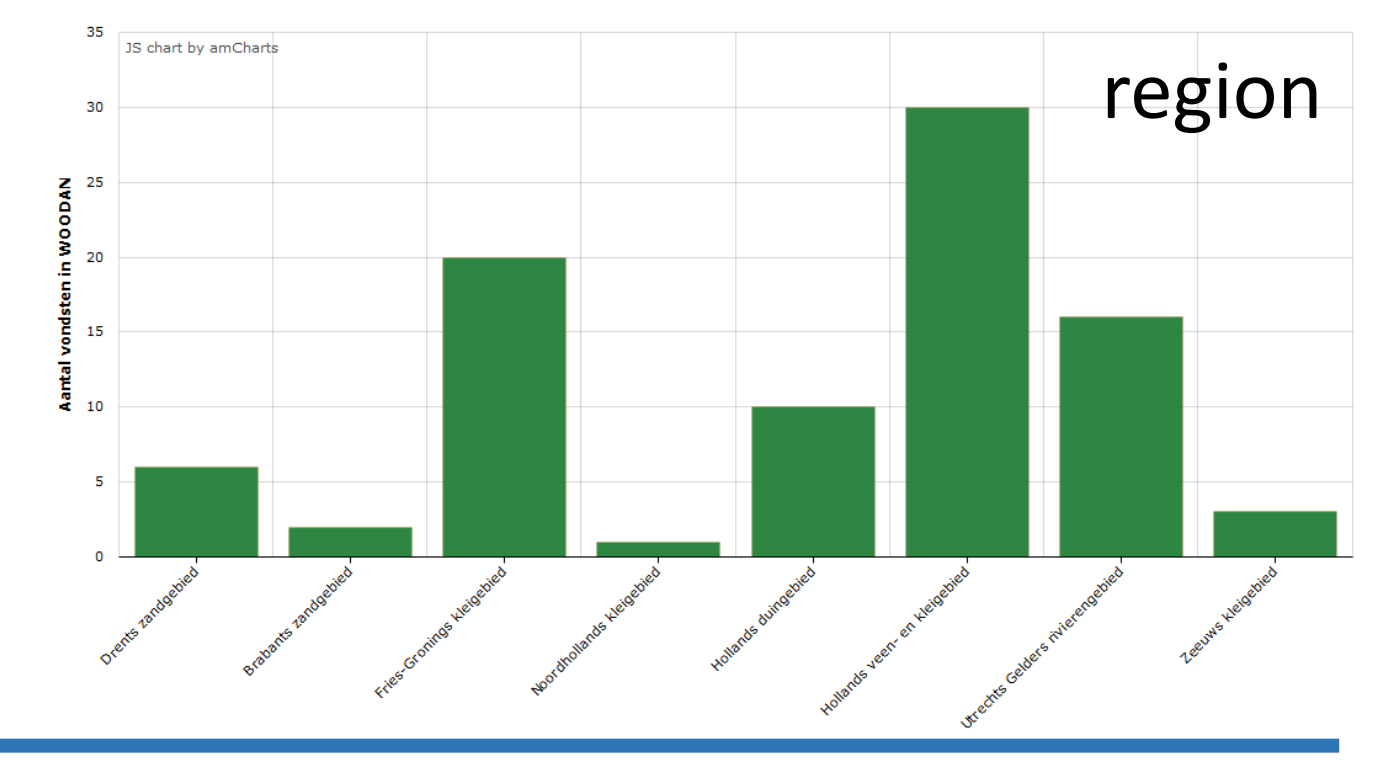
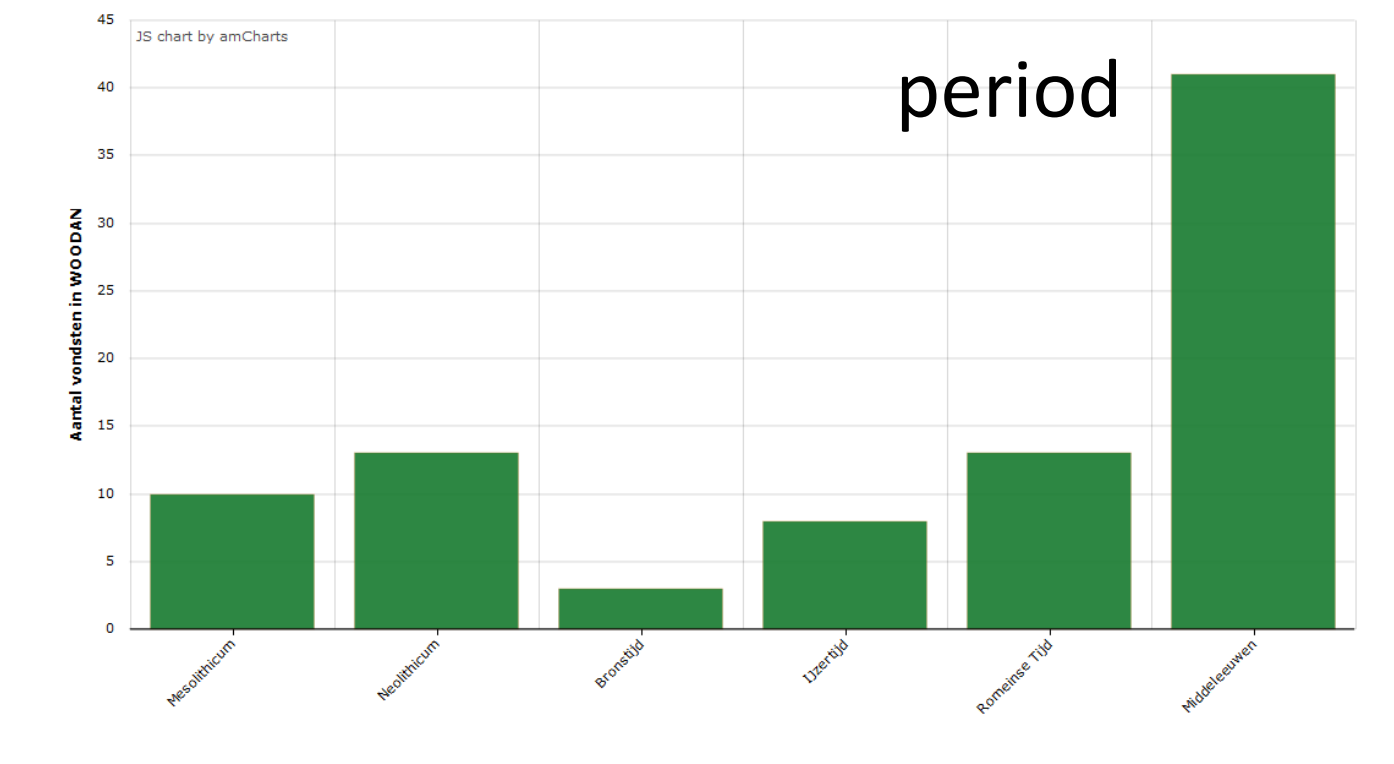
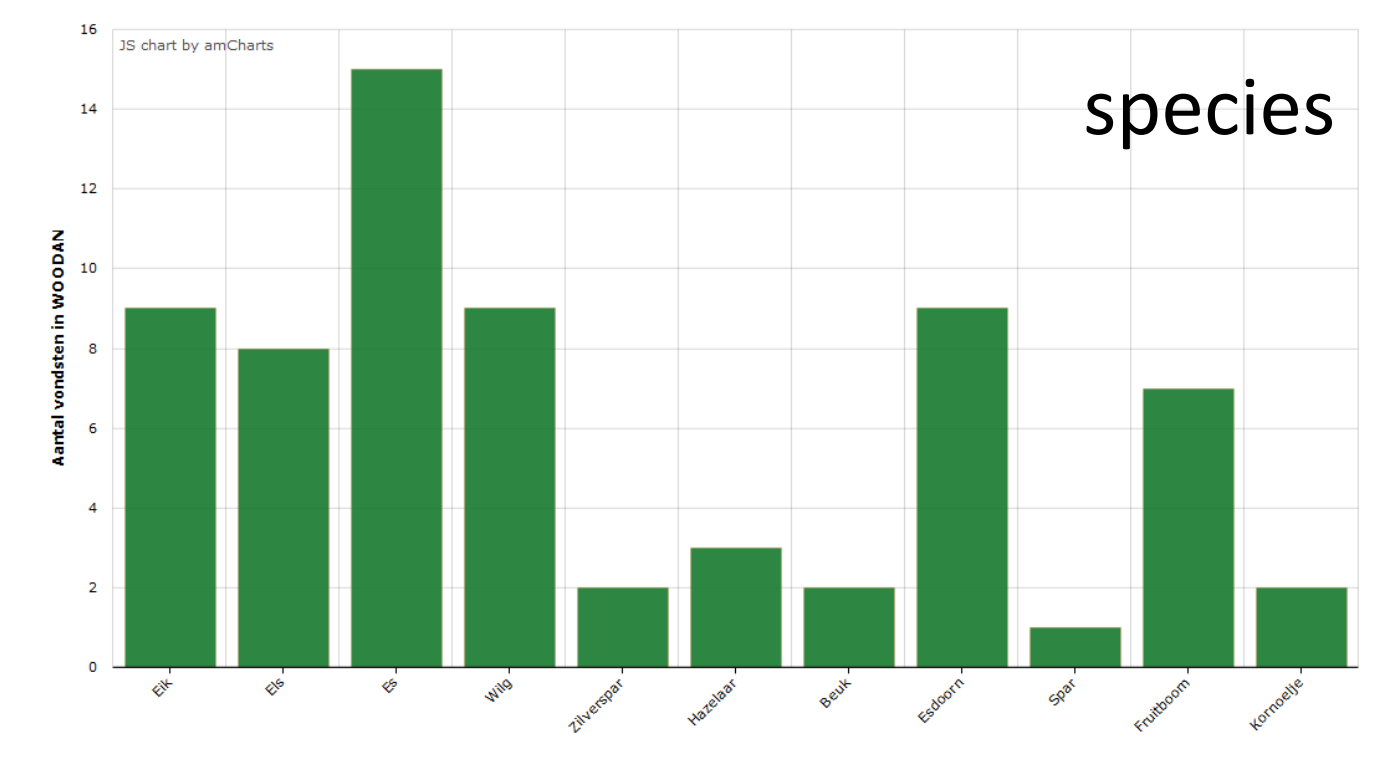
Spoke wheel, Late Middle Ages, Kolham – The Netherlands
Quercus sp.



Cooking bucket, Bronze age, Doetinchem – The Netherlands
Alnus sp.



Interactive display of find location



Instant analysis and trend visualisation

PAST

WOODAN started in 2015 from a project subsidized by the Netherlands Department of Cultural Heritage. The goal of this project was to synthesize all wooden artifacts from archaeological excavations from 1997 onwards (Malta archaeology).

The catalogue and analysis were finally published by Silke Lange in 2017. Where this book focusses primarily on categorizing and describing the many archaeological wooden finds, WOODAN was launched as an easy-to-use and online reference catalogue.

PRESENT

We are now a few years later and in 2018 the database was embedded into the newly established **WOODAN Foundation**.

- The foundation has two objectives:
- To collect and publish information about wooden archaeological finds.
 - To stimulate research on wooden archaeological objects.

The WOODAN Foundation has stated that it wants to be an independent foundation, whereby making a profit is not an objective.

FUTURE

From this stable basis, we hope to be able to further develop the system through subsidies or donors and stimulate new research initiatives on (pre-)historical wooden objects.

WOODAN Foundation is looking for new partners!
 Ready to join?
 Contact us: info@woodan.org

Wooden objects (from Flanders – Belgium) are currently being added to the database

1787 ARTIFACTS	287 PHOTOS	178 WOOD SPECIES	209 LOCATIONS